

Local Issues

LOCAL SOLUTIONS



Locally-Led Conservation

Local Work Groups, under the direction of conservation districts, are to “gather input from a broad range of agencies, organizations, businesses, and individuals... who have an interest in natural resource conditions and needs of the local area (county)

Farm Bill: Title 440 (Programs) Part 500 – Locally Led Conservation

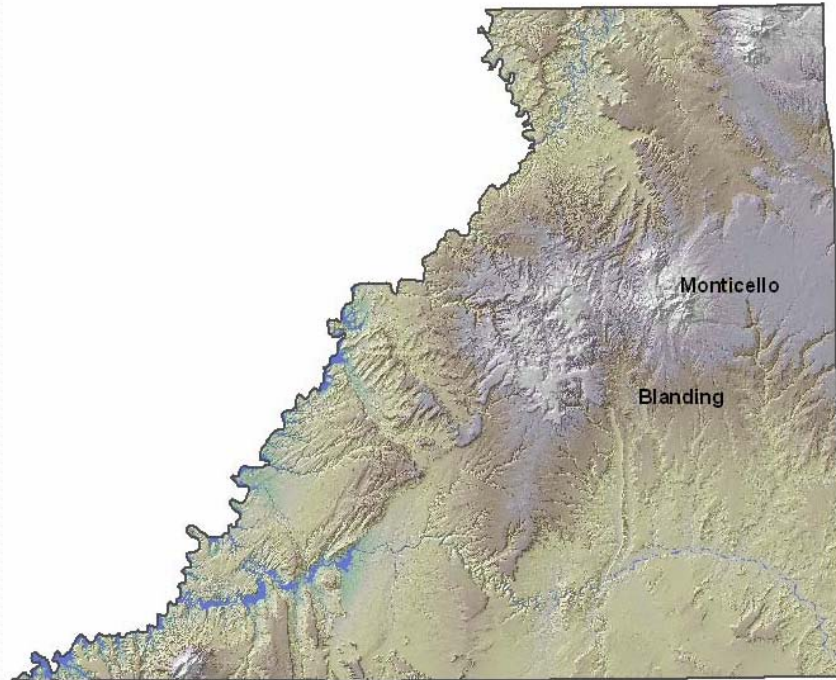
County Resource Assessment

- A presentation of 1) priority resources and concerns and 2) basic resources (soil, water, air, plants, animals, + humans)
- Not a strategic plan or annual work plan

San Juan County Resource Assessment

Conserving Natural Resources For Our Future

August 2010
San Juan Conservation District



Overwhelmed! San Juan CD

- 38
Conservation
Districts

- 29
Counties

- 12-18
Months



Utah PCD

Partners for Conservation and Development

- 10 State Agencies
- 7 Federal Agencies
- Governor's Office of Planning & Budget
- County Commission



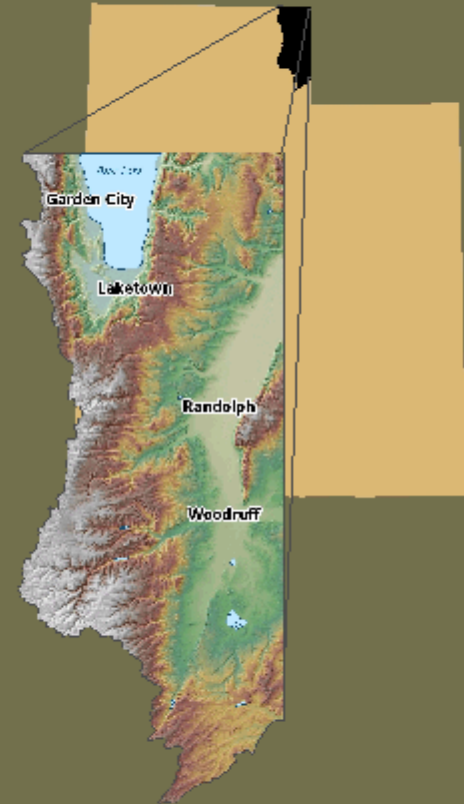
DRAFT, 9/07/10

Rich County Resource Assessment

Month 2010

Conserving Natural Resources For Our Future

Rich County Conservation District



Acknowledgements

Rich County Conservation District

with the:
Utah Association of Conservation Districts
Utah Department of Agriculture and Food
Natural Resources Conservation Service

in partnership with the:

Utah Conservation Commission

Utah Conservation Districts Zone's 1 through 7
Utah Association of Conservation Districts
Utah Department of Agriculture and Food
Utah Department of Environmental Quality
Utah Department of Natural Resources
Utah Grazing Board
Utah School and Institutional Trust Lands Administration
Utah State University Cooperative Extension Service
Utah Weed Supervisor Association

UtahPCD

State Agencies and Organizations:

Utah Association of Conservation Districts
Utah Department of Agriculture and Food
Utah Department of Community and Culture
Utah Department of Environmental Quality
Utah Department of Natural Resources
Utah Resource Conservation & Development Councils
Utah School and Institutional Trust Lands Administration

Utah State University Cooperative Extension Service
Utah State University College of Natural Resources
Utah Energy Office

Federal Agencies:

U.S. Department of Interior
Bureau of Land Management
U.S. Fish and Wildlife Service
Bureau of Reclamation
U.S. Department of Agriculture
U.S. Forest Service
Natural Resources Conservation Service
Agriculture Research Service
Farm Service Agency

Other

Governor's Office of Planning and Budget
Rich County Commission

Executive Summary



Farming, ranching, and recreation are important to the economy of Rich County. The county ranks in the top five Utah counties for beef cows.

Primary Focus: Resource Concerns

What is it? Where is it? This assessment strives to answer these questions pertaining to Rich County's natural resources, with a focus on identifying the most important natural resources and concerns and determining their location within the county. Local, state, or regional entities can use this information to evaluate the resource base and plan for future improvements.

What Resources are Assessed?

Basic resources are categorized as Soil, Water, Air, Plants, Animals and Humans (SWAPA + H). This assessment provides a general overview of each category, but puts greater emphasis on resources and concerns that the district has identified as priorities (above right).

Priority Resources and Concerns

The Rich County Conservation District has identified five natural resources and concerns as priorities:

- Locally Important Farmland, pg. 3
- Noxious Weeds, pg. 5
- Irrigation Canals, pg. 7
- Grazing Land, pg. 9
- Sage Grouse Habitat, pg. 11

The purpose of this assessment is to help ensure that conservation efforts in Rich County address the most important local resource needs. Further, a recent Coordinated Resource Management Plan (CRMP) for Rich County includes these same concerns as priorities.

Utah's Conservation Partnership

The principal responsibility for the resource assessment and this report is the Rich County Conservation District, with the Utah Association of Conservation Districts, Utah Department of Agriculture and Food, Utah Conservation Commission, and the Natural Resources Conservation Service. Member agencies of the Utah Farmer for Conservation Development (UtahPCD) and others have contributed information and their expertise as reviewers of the respective resources.

We recognize that all who could have provided information may not have had the opportunity. New information and/or changes may be needed when updates or future editions of this report are published. Your comments are requested.

Rich County Conservation District
195 N. Main St./P.O. Box 97
Randolph, Utah 84604

Conservation districts provide the local leadership and education to connect private property owners with state and federal assistance to improve, protect and sustain Utah's soil, water and related natural resources.

Table of Contents

• Introduction	1
<hr/>	
Background • Public Outreach • Outside Pressures	
• County Overview	2
<hr/>	
• Priority Resources and Concerns	3
<hr/>	
Locally Important Farmland • Noxious Weeds • Irrigation Canals • Grazing Land • Sage-Grouse Habitat	
• Basic Resources	13
<hr/>	
Soil • Water • Air • Plants • Animals • Humans	
• Reference and Credits	25
<hr/>	
<hr/>	

